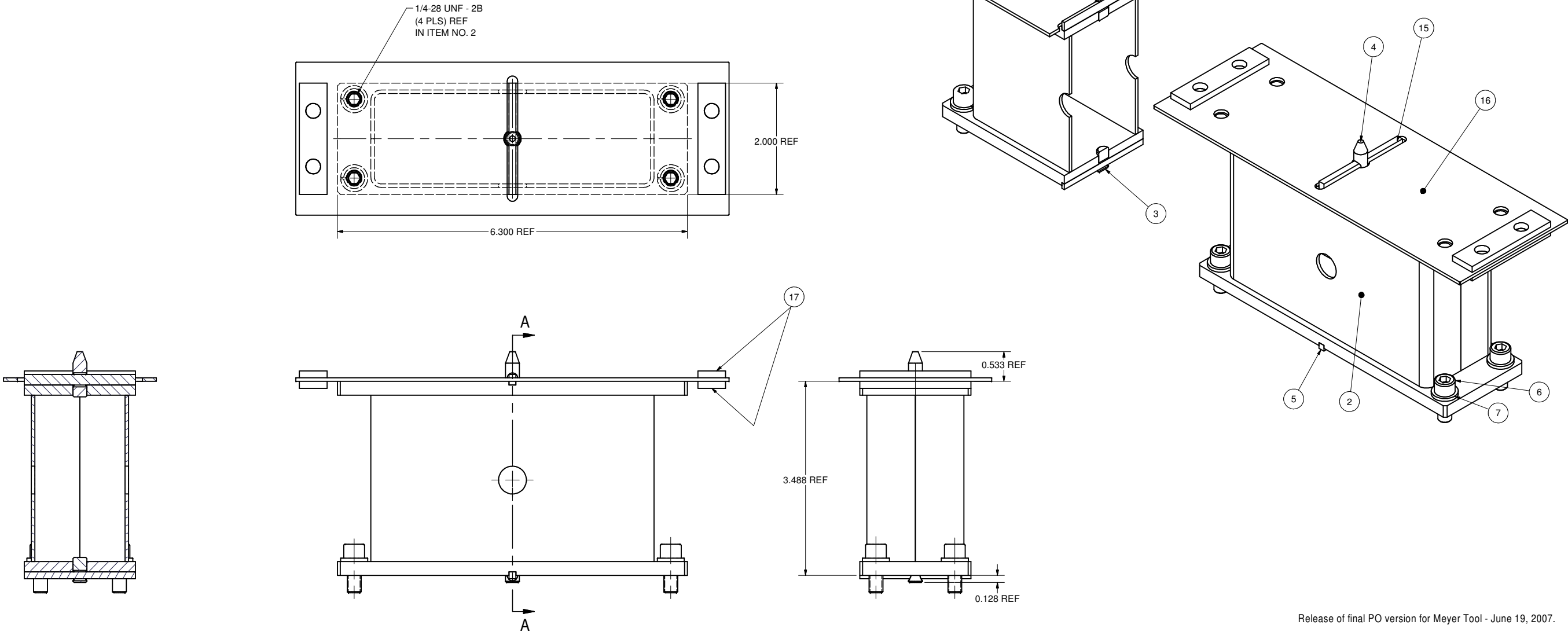


REVISIONS				
SYM.	ZONE	DESCRIPTION	DATE	APP.
A		Added Items 15,16 & 17 to Assembly & Parts List, 3.488 was 3.550 REF & 0.533 REF was 0.470 REF. JGL	9/6/07	EPC

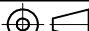
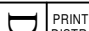





SECTION A-A

- 1
- HOM 78 SUPPORT ASSEMBLY

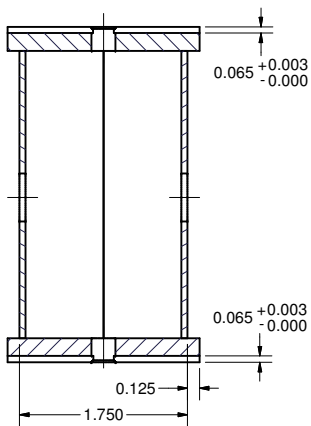
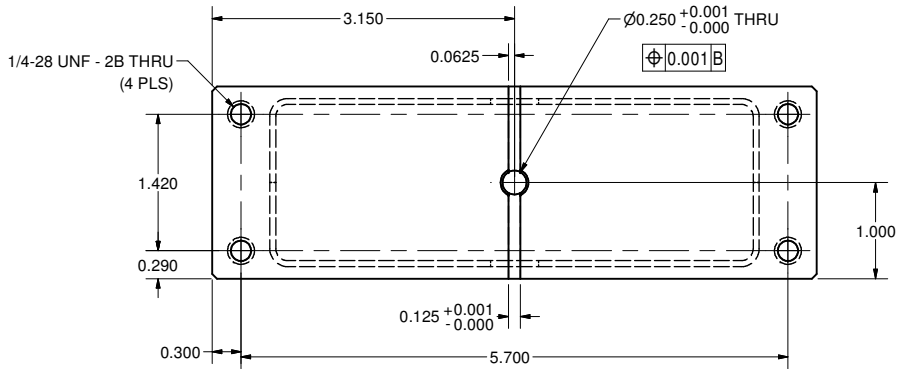
FILE NAME: 7102-031  
SHEET NO.: 1  
DFT. SCALE: 1:1  
MATERIAL:  
QTY: 1  
NOTES:

17	7102-031(SH. 4)	CLAMP PLATE	4				
16	7102-031(SH. 3)	OFE COPPER SHIM	1				
15	7102-031(SH. 4)	HOM KEY TOP	1				
7	PUR.	1/4 Spring Lock Washer	4			STAINLESS STEEL	
6	PUR.	1/4-28 x 5/8" SOCKET Head Cap Screw	4			316L S.S	
5	7102-031(SH. 4)	HOM KEY BOTTOM	1				
4	7102-031(SH. 4)	HOM PIN LONG	1				
3	7102-031(SH. 4)	HOM PIN SHORT	1				
2	7102-031(SH. 2)	HOM-78 SUPPORT SUB ASSEMBLY	1				
1	7102-031(SH. 1)	HOM 78 SUPPORT ASSEMBLY	X				

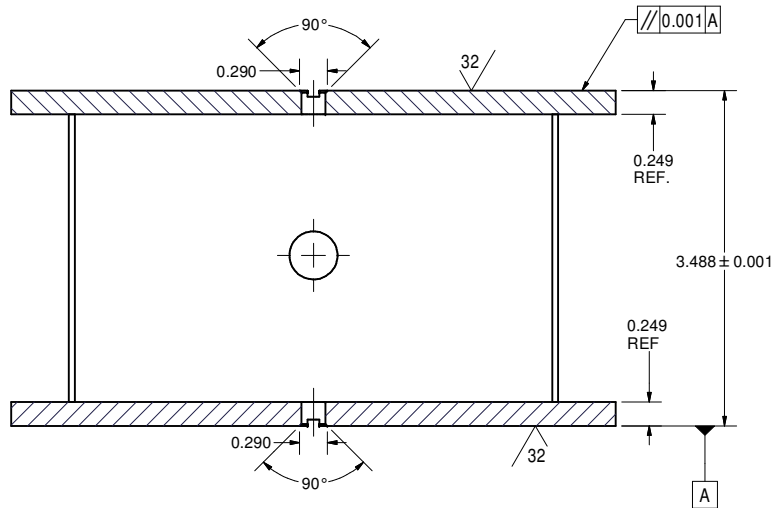
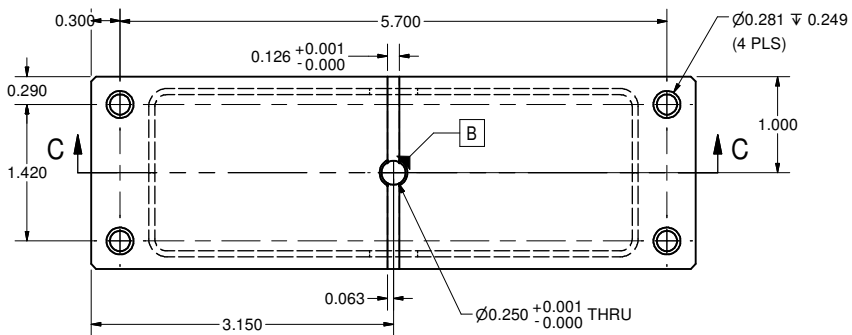
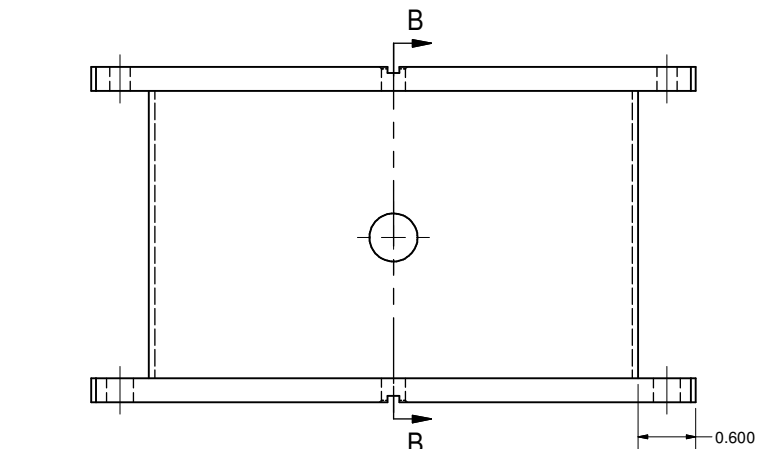
	ITEM	DWG. NO.	DESCRIPTION			G1	G2	G3	REMARKS	REV.
						QUANTITY				
	PRINT DISTR.	PLOT DATE: 11/26/2007 CAD FILE NAME: 7102-031.idw								
	7102-031 SH. NO. 1 OF 7	CR1	UNLESS OTHERWISE SPECIFIED:  DIMENSIONS ARE IN INCHES:  TOLERANCES ON: .0 ± .02 .00 ± .010 .000 ± .005 FRACTIONS ± 1/32 ANGLES ± 0.5° ALL SURFACES 	<div><div><div>CORNELL UNIVERSITY</div><div>LEPP</div><div>LABORATORY FOR ELEMENTARY-PARTICLE PHYSICS</div></div><div>CORNELL UNIVERSITY Floyd R. Newman Laboratory Ithaca, NY 14853</div></div>						
ERL HORIZONTAL TEST CRYOMODULE HOM SUPPORTS HOM 78 SUPPORT ASSEMBLY DETAIL										
A		CHECKED BY: VM	DRAWN BY applin	DRAWN FOR VM	DATE 8/15/2006	SCALE		7102-031	REV. A	
	APPROVED BY: VM					SH. NO. 1 OF 7				

FOR MACHINING LUBRICANT USE ONLY  
ALKALINE DETERGENT LUBRICANT CIMSTAR 40  
OR EQUIVALENT APPROVED BY CORNELL LEPP

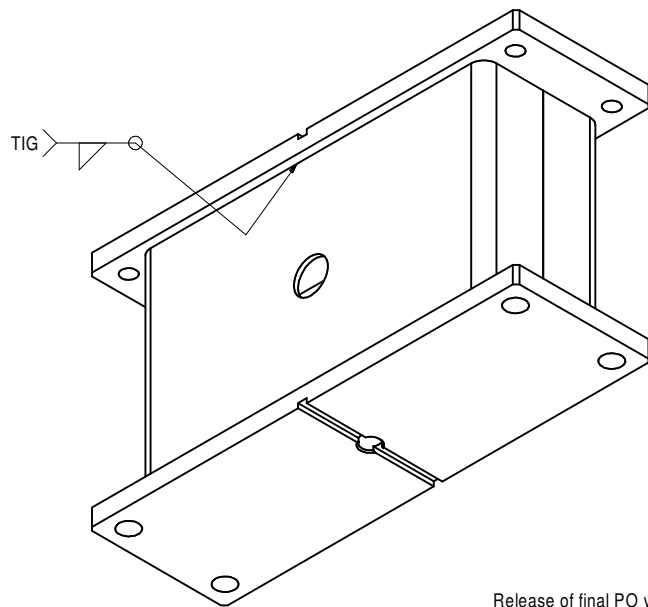
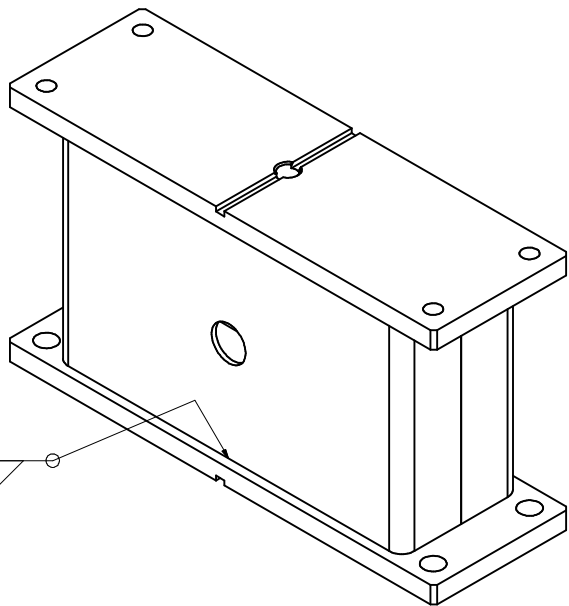
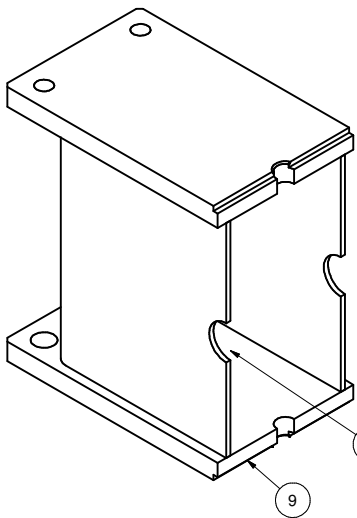
REVISIONS				
SYM.	ZONE	DESCRIPTION	DATE	APP.
A	B-6	0.249 REF was 0.280 - 2 Pls & 3.488 Plus/Minus 0.001 was 3.550 Plus/Minus 0.001 JGL	9/6/07	EPC



SECTION B-B



SECTION C-C



Release of final PO version for Meyer Tool - June 19, 2007.

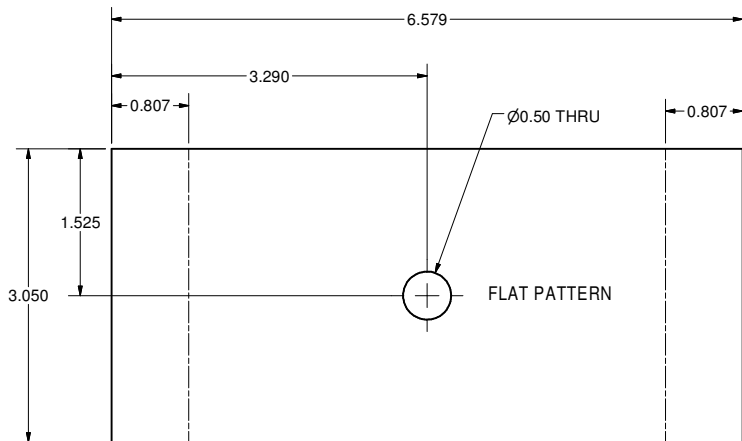
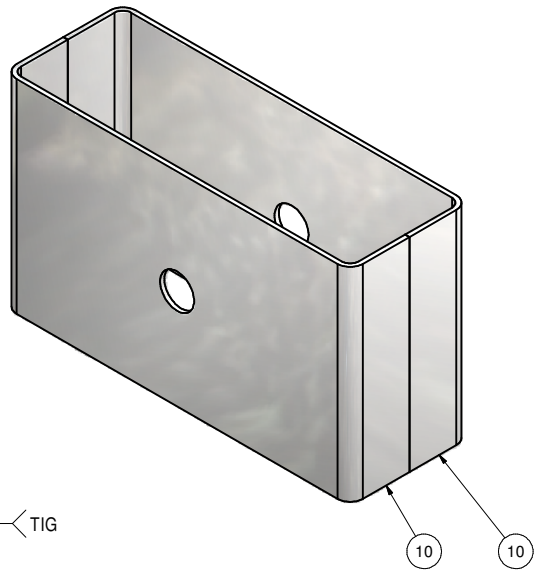
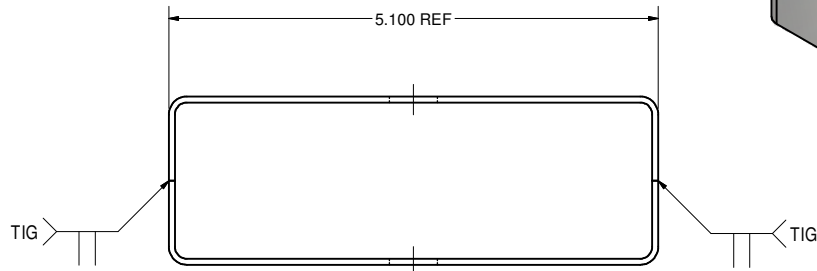
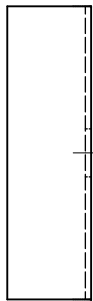
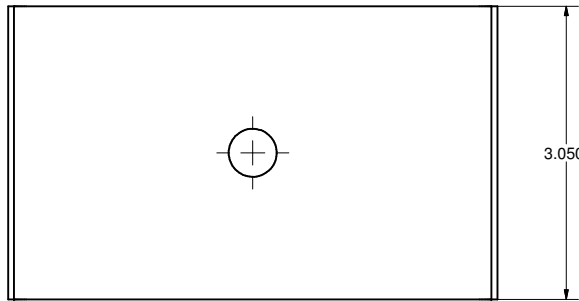
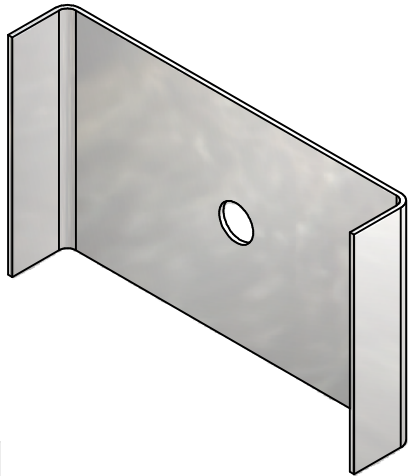
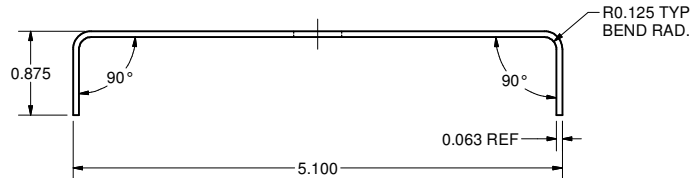
2 HOM 78 SUPPORT SUB ASSEMBLY

FILE NAME: 7102-031  
SHEET NO.: 2  
DFT. SCALE: 1:1  
MATERIAL: 316L S.S.  
QTY: 1  
NOTES:

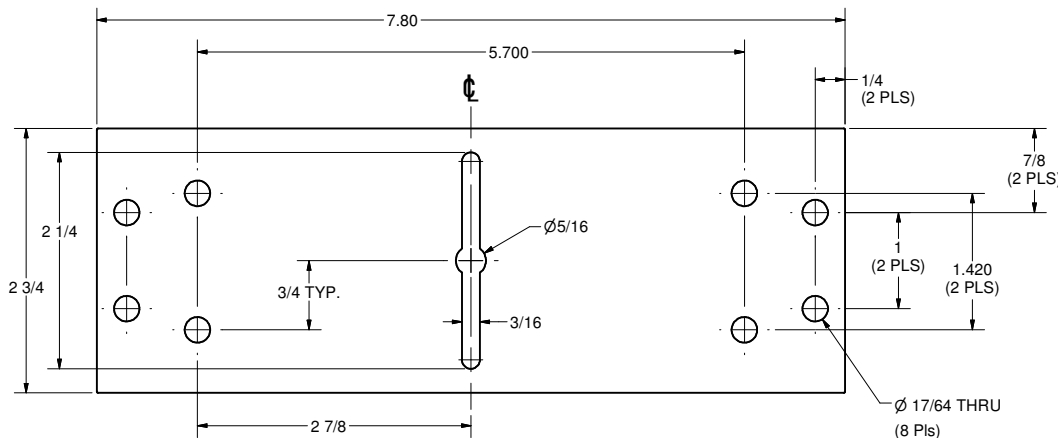
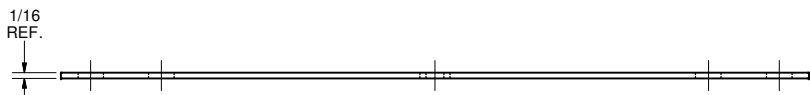
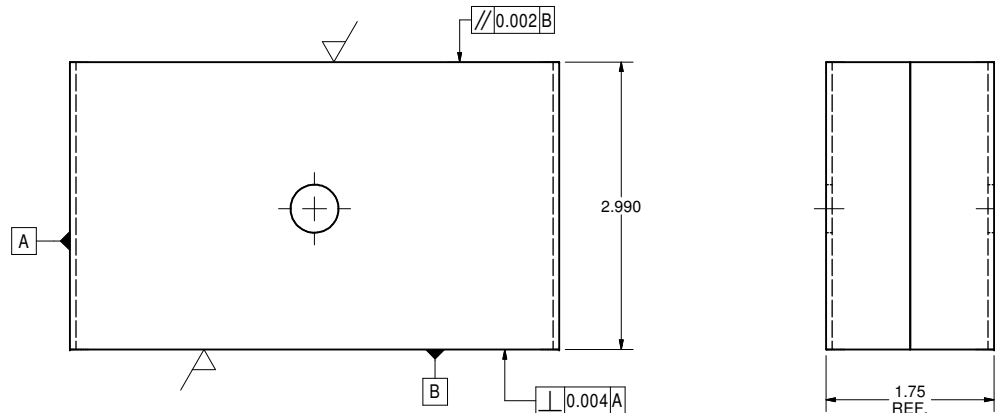
FOR MACHINING LUBRICANT USE ONLY  
ALKALINE DETERGENT LUBRICANT CIMSTAR 40  
OR EQUIVALENT APPROVED BY CORNELL LEPP

ITEM		DWG. NO.		DESCRIPTION		QUANTITY		REMARKS		REV.	
9	7102-031 (SH.4)	HOM SUPPORT'S PLATE		2							
8	7102-031 (SH.3)	HOM-78 SUPPORT TUBE SUB ASSEMBLY		1							
2	7102-031 (SH.2)	HOM 78 SUPPORT SUB ASSEMBLY		X							
ITEM		DWG. NO.		DESCRIPTION		QUANTITY		REMARKS		REV.	
D		PRINT DISTR.		PLOT DATE: 11/26/2007 CAD FILE NAME: 7102-031.idw							
7102-031		CR1		UNLESS OTHERWISE SPECIFIED: DIMENSIONS ARE IN INCHES: TOLERANCES ON: .0 ± .02 .00 ± .010 FRACTIONS ± 1/32 ANGLES ± 0.5° ALL SURFACES		CORNELL UNIVERSITY FLOYD R. NEWMAN LABORATORY ITHACA, NY 14853		ERL HORIZONTAL TEST CRYOMODULE HOM SUPPORTS HOM 78 SUPPORT SUB ASSEMBLY DETAILS		8/15/2006	
A		REV.		DRAWN BY applin		DRAWN FOR VM		SCALE D		7102-031 SH. NO. 2 OF 7	
										A	

REVISIONS						
SYM.	ZONE	DESCRIPTION			DATE	APP.
A	A-7	Added Item No. 16 JGL			9/6/07	EPC
B	A-7	Redimensioned Item #16 JGL			10/19/07	TIO



10 HOM 78 SUPPORT SHELL  
FILE NAME: 7102-031  
SHEET NO.: 3  
DFT. SCALE: 1:1  
MATERIAL: 0.0625 SHEET 316L S.S.  
QTY: 2 PER ASSEMBLY  
NOTES:



16 OFE Copper Shim  
FILE NAME: 7102-031  
SHEET NO.: 3  
DFT. SCALE: 1:1  
MATERIAL: OFE Copper 1/16 THK.  
QTY: 1 Per Assembly  
NOTES:

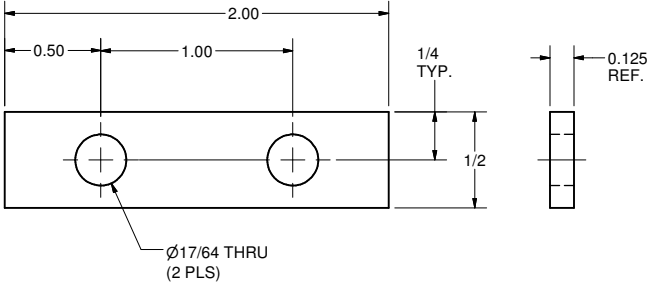
FOR MACHINING LUBRICANT USE ONLY  
ALKALINE DETERGENT LUBRICANT CIMSTAR 40  
OR EQUIVALENT APPROVED BY CORNELL LEPP

8 HOM 78 SUPPORT TUBE SUB ASSEMBLY  
FILE NAME: 7102-031  
SHEET NO.: 3  
DFT. SCALE: 1:1  
MATERIAL: 316L S.S.  
QTY: 1  
NOTES:

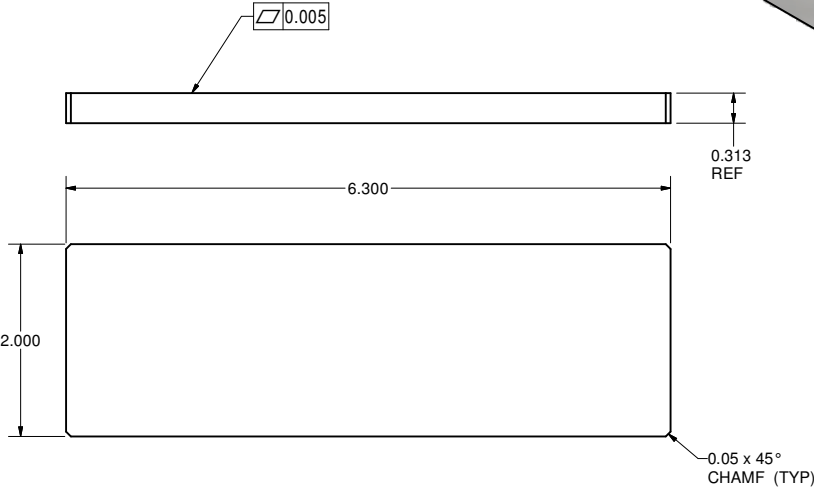
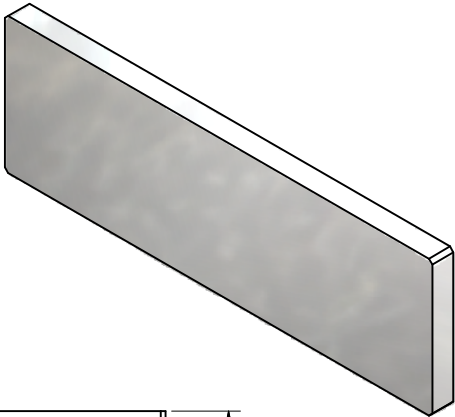
Release of final PO version for Meyer Tool - June 19, 2007.

10	7102-031 (SH. 3)	HOM-78 SUPPORT SHELL	2					
8	7102-031 (SH. 3)	HOM 78 SUPPORT TUBE SUB ASSEMBLY	X					
ITEM	DWG. NO.	DESCRIPTION	G1	G2	G3	REMARKS	REV.	
			QUANTITY					
PRINT DISTR.	CR1	PLOT DATE: 11/26/2007 CAD FILE NAME: 7102-031.idw						
7102-031 SH. NO. 3 OF 7	REV B	UNLESS OTHERWISE SPECIFIED: DIMENSIONS ARE IN INCHES: TOLERANCES ON: .0 ± .02 .00 ± .010 .000 ± .005 FRACTIONS ± 1/32 ANGLES ± 0.5° ALL SURFACES 63°	CORNELL UNIVERSITY FLOYD R. NEWMAN LABORATORY ITHACA, NY 14853					
ERL HORIZONTAL TEST CRYOMODULE HOM SUPPORTS HOM 78 SUPPORT TUBE DETAILS			CHECKED BY: VM	DRAWN BY: applin	DRAWN FOR: VM	DATE: 8/15/2006	SCALE: D	7102-031 SH. NO. 3 OF 7
APPROVED BY: VM			REV. B					

REVISIONS				
SYM.	ZONE	DESCRIPTION	DATE	APP.
A		Item 4 Lengthed part and Elongated .188 hole, Item 5 Qty was 2 & added Item 15 JGL	9/6/07	EPC
B	E3	PT.17 QTY. WAS 24. TMK	11/26/07	TIO

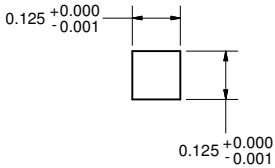
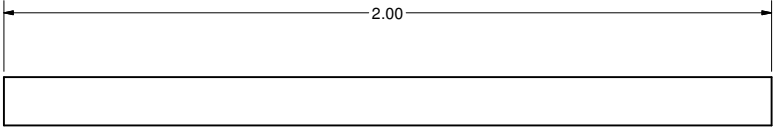


17 CLAMP PLATE  
FILE NAME: 7102-031  
SHEET NO.: 4  
DFT. SCALE: 2:1  
MATERIAL: 316 S.S. X 1/8" THK.  
QTY: 4 PER ASSEMBLY ( 48 TOTAL)  
NOTES:

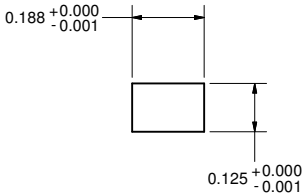
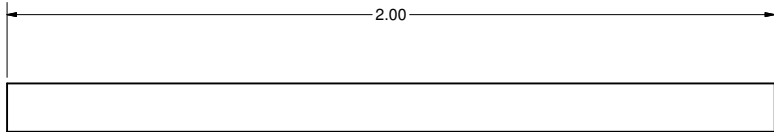
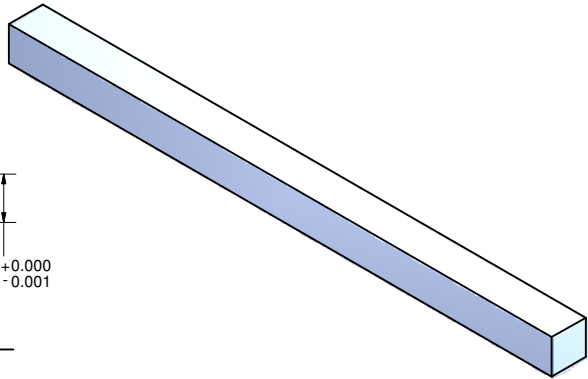


9 HOM SUPPORT'S PLATE  
FILE NAME: 7102-031  
SHEET NO.: 4  
DFT. SCALE: 1:1  
MATERIAL: 5/16" 316L ST. STEEL SHEET  
QTY: 2 PER ASSEMBLY  
NOTES:

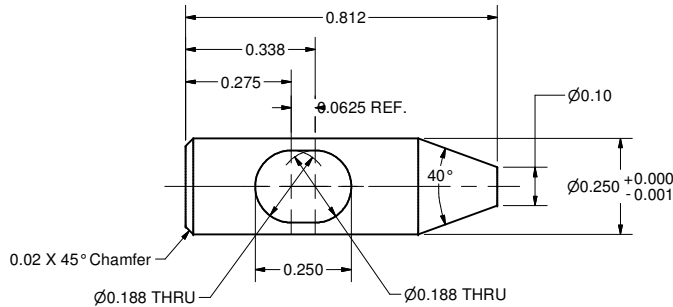
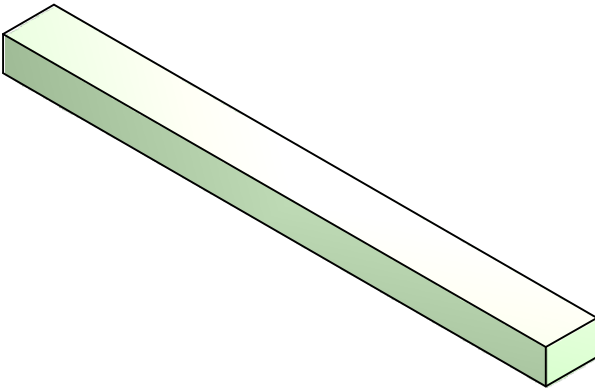
Release of final PO version for Meyer Tool - June 19, 2007.



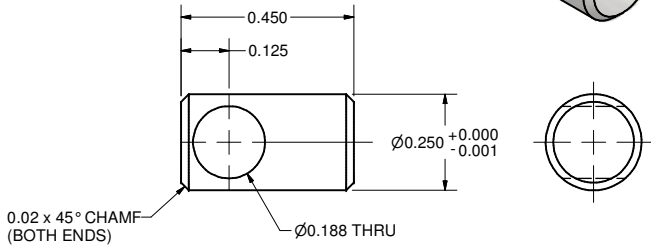
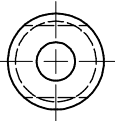
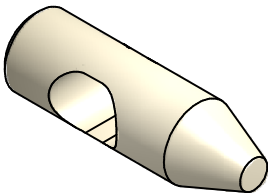
5 HOM KEY - BOTTOM  
FILE NAME: 7102-031  
SHEET NO.: 4  
DFT. SCALE: 4:1  
MATERIAL: 316L S.S.  
QTY: 1 PER ASSEMBLY  
NOTES:



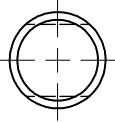
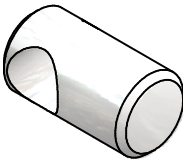
15 HOM KEY - TOP  
FILE NAME: 7102-031  
SHEET NO.: 4  
DFT. SCALE: 4:1  
MATERIAL: 316L S.S.  
QTY: 1 PER ASSEMBLY  
NOTES:



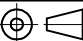


4 HOM PIN LONG  
FILE NAME: 7102-031  
SHEET NO.: 4  
DFT. SCALE: 4:1  
MATERIAL: 316L S.S.  
QTY: 1 PER ASSEMBLY  
NOTES:



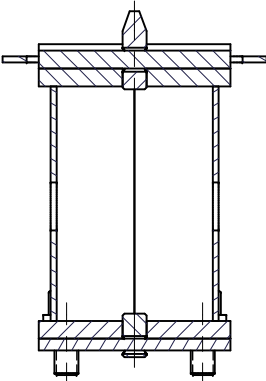
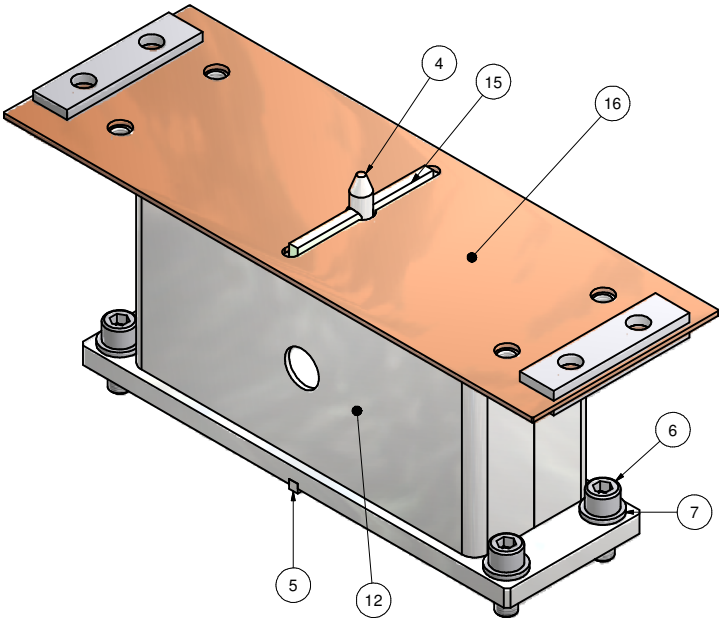
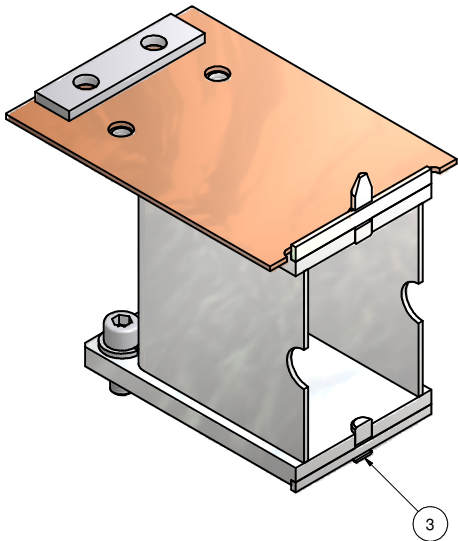
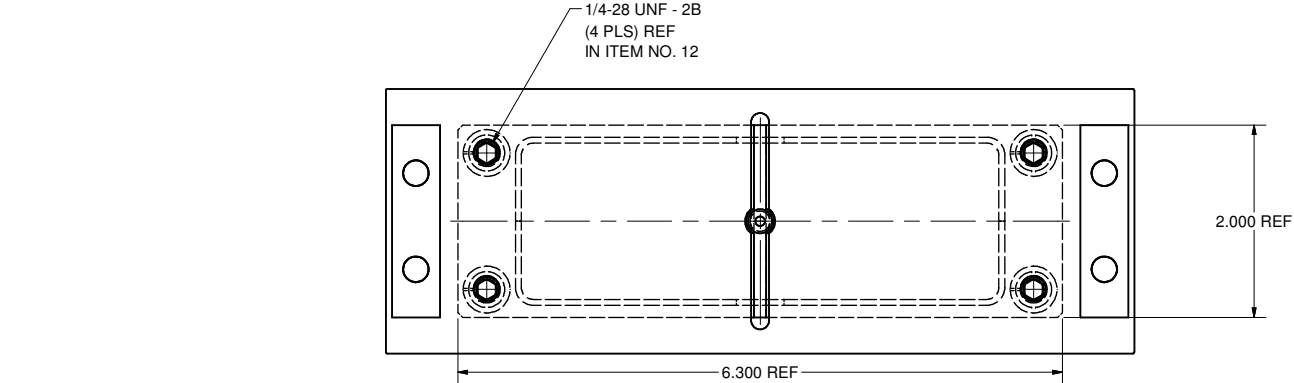
3 HOM PIN SHORT  
FILE NAME: 7102-031  
SHEET NO.: 4  
DFT. SCALE: 4:1  
MATERIAL: 316L S.S.  
QTY: 1 PER ASSEMBLY  
NOTES:



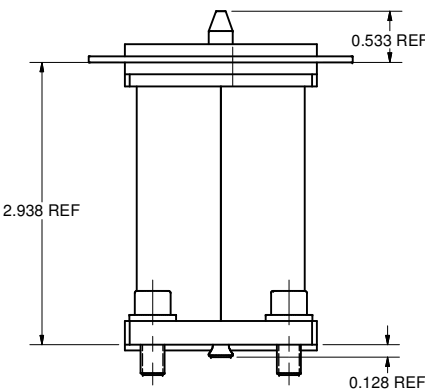
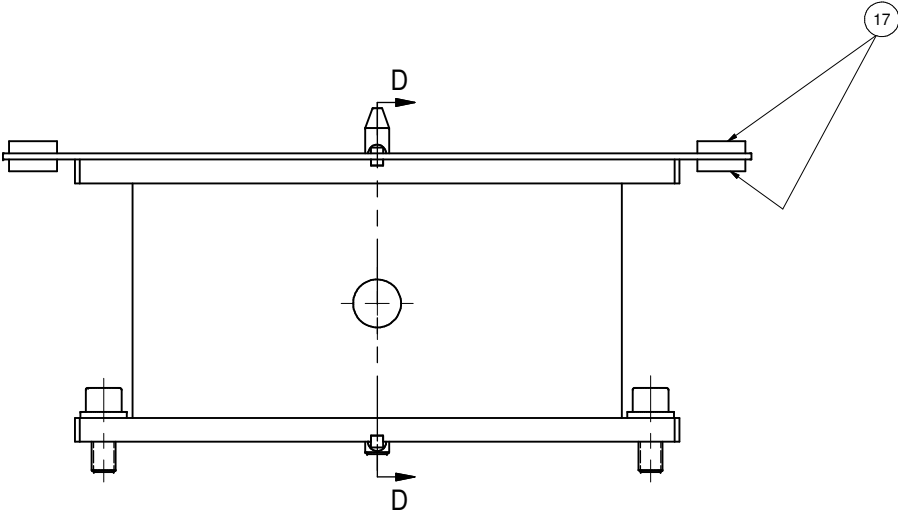
FOR MACHINING LUBRICANT USE ONLY  
ALKALINE DETERGENT LUBRICANT CIMSTAR 40  
OR EQUIVALENT APPROVED BY CORNELL LEPP

		ITEM	DWG. NO.	DESCRIPTION			G1	G2	G3	REMARKS		REV.
								QUANTITY				
D		PRINT DISTR.		PLOT DATE: 11/26/2007 CAD FILE NAME: 7102-031.idw								
7102-031 SH. NO. 4 OF 7		CR1	UNLESS OTHERWISE SPECIFIED:  DIMENSIONS ARE IN INCHES;  TOLERANCES ON: .0 ± .02 .00 ± .010 .000 ± .005 FRACTIONS ± 1/32 ANGLES ± 0.5° ALL SURFACES 		<div>CORNELL UNIVERSITY  CORNELL UNIVERSITY Floyd R. Newman Laboratory Ithaca, NY 14853</div> <div>ERL HORIZONTAL TEST CRYOMODULE HOM SUPPORTS COMMON HOM SUPPORT DETAILS</div>							
B		REV.	CHECKED BY: VM	DRAWN BY applin	DRAWN FOR VM	DATE 8/15/2006	SCALE	D		7102-031 SH. NO. 4 OF 7		REV. B
			APPROVED BY: VM									

REVISIONS				
SYM.	ZONE	DESCRIPTION	DATE	APP.
A		Added Items 15,16 & 17 to assembly & Parts List. 2.938 REF was 3.000 REF & 0.533 REF was 0.470 REF REF JGL	9/6/07	EPC



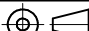
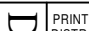



SECTION D-D



11 HOM 106 SUPPORT ASSEMBLY  
FILE NAME: 7102-031  
SHEET NO.: 5  
DFT. SCALE: 1:1  
MATERIAL:  
QTY: 1  
NOTES:

Release of final PO version for Meyer Tool - June 19, 2007.

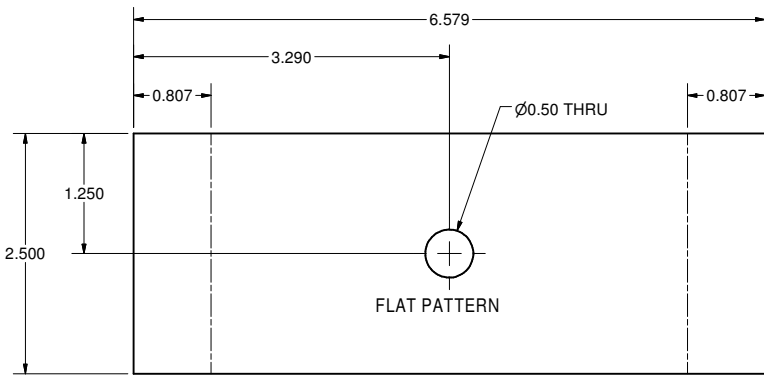
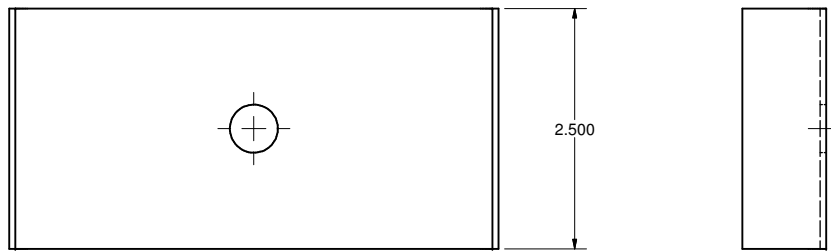
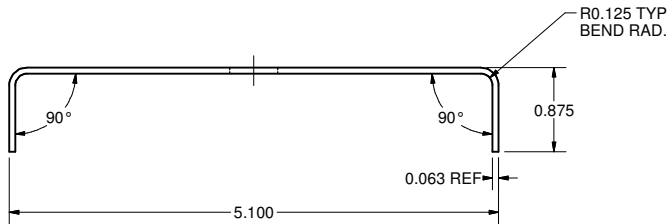
17	7102-031 (SH. 4)	CLAMP PLATE	4					
16	7102-031 (SH. 3)	OFE COPPER SHIM	1					
15	7102-031 (SH. 4)	HOM KEY TOP	1					
7	PUR.	1/4 Spring Lock Washer	4				ST. STEEL	
6	PUR.	1/4-28 x 5/8" Socket Head Cap Screw	4				316L ST. STEEL	
12	7102-031 (SH. 6)	HOM-106 SUPPORT SUB ASSEMBLY	1					
5	7102-031 (SH. 4)	HOM KEY BOTTOM	1					
4	7102-031 (SH. 4)	HOM PIN LONG	1					
3	7102-031 (SH. 4)	HOM PIN SHORT	1					
1	7102-031 (SH. 5)	HOM 106 SUPPORT ASSEMBLY	X					

	ITEM	DWG. NO.	DESCRIPTION	G1	G2	G3	REMARKS	REV.					
				QUANTITY									
 D	PRINT DATE: 11/26/2007 CAD FILE NAME: 7102-031.idw												
	CR1	UNLESS OTHERWISE SPECIFIED:  DIMENSIONS ARE IN INCHES:  TOLERANCES ON: .0 ± .02 .00 ± .010 .000 ± .005 FRACTIONS ± 1/32 ANGLES ± 0.5° ALL SURFACES 		<div>  CORNELL UNIVERSITY Floyd R. Newman Laboratory Ithaca, NY 14853</div> <div>LABORATORY FOR ELEMENTARY-PARTICLE PHYSICS</div>									
									ERL HORIZONTAL TEST CRYOMODULE HOM SUPPORTS HOM 106 SUPPORT ASSEMBLY DETAIL				
		CHECKED BY: VM	DRAWN BY applin	DRAWN FOR VM	DATE 8/15/2006	SCALE D	7102-031 SH. NO. 5 OF 7	REV. A					
		APPROVED BY: VM											

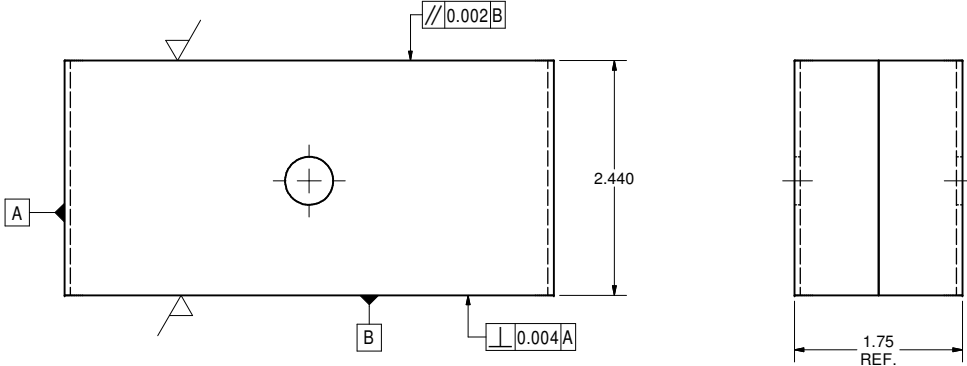
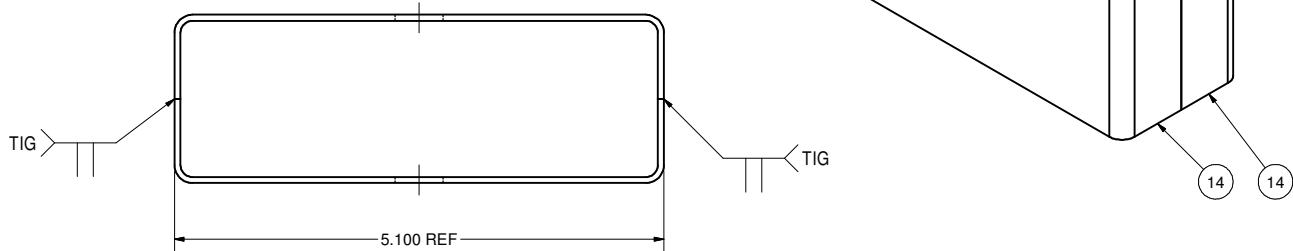
FOR MACHINING LUBRICANT USE ONLY  
ALKALINE DETERGENT LUBRICANT CIMSTAR 40  
OR EQUIVALENT APPROVED BY CORNELL LEPP



REVISIONS				
SYM.	ZONE	DESCRIPTION	DATE	APP.

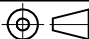




40 HOM 106 SUPPORT SHELL  
FILE NAME: 7102-031  
SHEET NO.: 7  
DFT. SCALE: 1:1  
MATERIAL: 0.0625 SHEET 316L S.S.  
QTY: 2 PER ASSEMBLY  
NOTES:



32 HOM 106 SUPPORT TUBE SUB ASSEMBLY  
FILE NAME: 7102-031  
SHEET NO.: 7  
DFT. SCALE: 1:1  
MATERIAL: 316L S.S.  
QTY: 1  
NOTES:

Release of final PO version for Meyer Tool - June 19, 2007.

		14	1702-031 (SH. 7)		HOM-106 SUPPORT SHELL		2								
		13	1702-031 (SH. 7)		HOM 106 SUPPORT TUBE SUB ASSEMBLY		X								
	ITEM	DWG. NO.		DESCRIPTION			G1	G2	G3	REMARKS	REV.				
							QUANTITY								
	PLOT DATE: 11/26/2007														
	CAD FILE NAME: 7102-031.idw														
7102-031 SH. NO. 7 OF 7	CR1	UNLESS OTHERWISE SPECIFIED:  DIMENSIONS ARE IN INCHES: TOLERANCES ON: .0 ± .02 .00 ± .010 .005 ± .005 FRACTIONS ± 1/32 ANGLES ± 0.5° ALL SURFACES		<div><div><div>CORNELL UNIVERSITY</div><div>LEPP</div><div>LABORATORY FOR ELEMENTARY-PARTICLE PHYSICS</div></div><div>CORNELL UNIVERSITY Floyd R. Newman Laboratory Ithaca, NY 14853</div><div>ERL HORIZONTAL TEST CRYOMODULE HOM SUPPORTS HOM 106 SUPPORT TUBE DETAILS</div></div>											
				CHECKED BY: VM		DRAWN BY applin		DRAWN FOR VM		DATE 8/15/2006		SCALE D		7102-031 SH. NO. 7 OF 7	
REV.	APPROVED BY: VM														